

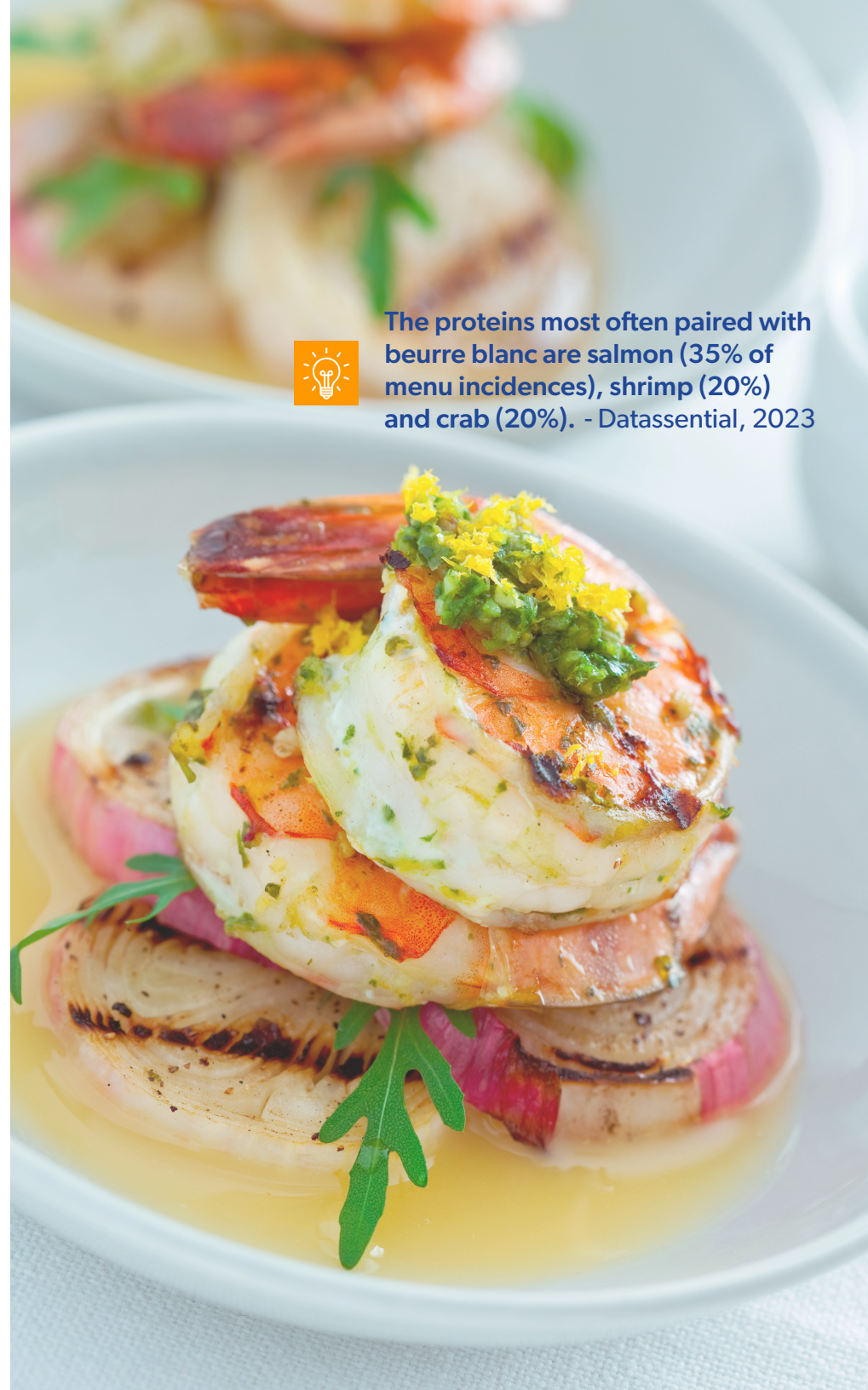
Beurre Blanc

Blends & Bases Platform

Just one base delivers chef-quality flavor with fewer ingredients and less time compared to traditional methods.

Features & Benefits

- Versatile and cost effective
- Create consistency in BOH
- Unbreakable with freeze-thaw stability
- Made with clean label, real ingredients
- Scratch-made taste without the labor



The proteins most often paired with beurre blanc are salmon (35% of menu incidences), shrimp (20%) and crab (20%). - Datassential, 2023